

PLAN. DESIGN. IMPLEMENT.

Example Parks & Recreation Projects

2024



ms consultants, inc.
engineers, architects, planners

PLAN

- » Lay the groundwork for future parks and recreation projects
- » Engage the public to gain local input and buy-in
- » Examine project feasibility through cost estimation and conceptual design
- » Assess partnerships and funding mechanisms



DESIGN

- » Conduct permits and zoning due diligence
- » Provide schematic design, design development, and construction documentation
- » Ability to integrate survey, engineering, and architecture services



IMPLEMENT

- » Perform construction administration
- » Act as owner's representative
- » Assist with right of way acquisition and other regulatory procedures
- » Prepare bid documents, facilitate bidding process, and alternative project delivery expertise
- » Manage program-level project tracking



Great Stone Viaduct Trail

Great Stone Viaduct Historical Education Society (GSVHES)

This rail-to-trail project not only preserves an iconic landmark but has also transformed the area into a walking path and plaza. After 10 years of work and planning, GSVHES was able to bring its dream of restoration into reality.

Services

- » Civil and Structural Engineering
- » Trail Design
- » ODOT Environmental Approval
- » Cultural Resource Coordination
- » Public Engagement
- » Bridge Design
- » Water Resource Engineering
- » Cost Estimation



Program Management Recreation Master Plan Implementation

Muskingum Watershed Conservancy District
(MWCD)

Since being selected in 2014, ms has assisted MWCD in implementation of a \$195M District-wide program for hundreds of campground, marina and trail improvement projects at 8 District lake locations.

Services

- » Programming
- » Cost Estimation
- » Design QA/QC
- » Permit Monitoring
- » Bid Assistance
- » Construction assistance, including claim mitigation and negotiation.



Fairgrounds Master Plan Implementation

Pickaway County

ms led a master planning process to ensure the continued preservation of the county's agricultural heritage, while also providing for the future relevance and vitality of the Pickaway County Fairgrounds. In addition to the master plan, ms consultants created construction documents for 8 different structures and traffic improvement plans around the 60-acre campus.

Services

- » Architecture
- » Civil and Structural Engineering
- » MEP Engineering
- » Landscape Architecture
- » Energy Modeling
- » Cost Estimation
- » Permitting
- » ADA Compliance
- » Surveying
- » Construction Administration



Mahoning River Corridor Revitalization

Eastgate Council of Governments

ms originally created the Revitalization Plan in 2021 and has been spearheading its further development and implementation since. Most recently, ms developed conceptual designs for 8 riverfront park access points for inclusion in Eastgate's Appalachian Community Grant Program (ACGP) application.

Services

- » Riverfront Planning
- » Water Resources Engineering
- » Land Use Analysis
- » Branding and Marketing
- » Bridge Engineering
- » Landscape Architecture
- » Urban Design
- » Trail Alignment



Cederquist Park Trail

Ashtabula Township Park Commission

The ms environmental team worked closely with our survey and trail design team to prepare construction plans, specifications, and bidding materials for this new 2,500-foot long hard surface trail within the Cederquist portion of Indian Trails Park in Ashtabula County.

Services

- » Civil and Structural Engineering
- » Environmental Engineering
- » Geographic Information Systems (GIS)
- » Cost Estimation
- » Army Corps Permitting/Approval
- » ADA Compliance
- » Construction Administration
- » Surveying



Sand Run Parkway

Summit Metro Parks

The Summit Metro Parks contracted ms to design channel and bridge improvements at several locations along the unnamed Sand Run Tributary and Sand Run Parkway.

Services

- » Civil and Structural Engineering
- » Bridge and Trail Design
- » Cost Estimation
- » ADA Compliance
- » Construction Administration/Inspection
- » Water Resources and Hydraulic Analysis



Statewide Planning Agent

Ohio Department of Natural Resources (ODNR)

ms consultants serves as the Statewide Strategic Facility Planning Agent to assist the ODNR Division of Engineering (DOE) with an ongoing strategic facility planning initiative. ODNR is currently amid a robust capital improvements program including, but not limited to, lodges, campgrounds, cabins, marinas, trails, buildings, roadways, and water and wastewater facilities, as well as all utilities and infrastructure required for these assets.

Services Involved

- » Master Planning
- » Cost Estimation
- » Facility Assessments
- » Project Database Creation
- » Project Prioritization Criteria
- » Stakeholder Engagement
- » Geographic Information Systems (GIS)
- » Data Analysis
- » Capital Planning



BUCKEYE LAKE

STATE PARK MASTER PLAN

| DECEMBER 2022 |

Youngstown Amphitheatre

City of Youngstown

ms consultants was hired as a subconsultant to MKSK for architectural and civil design services for the Riverfront Park and Amphitheater located adjacent to the Covelli Centre, a 5,700-seat multi-purpose convocation center and sports arena in downtown Youngstown, Ohio.

Services Involved

- » Architecture
- » Civil and Structural Engineering
- » MEP Engineering
- » Cost Analysis
- » ADA Compliance
- » Construction Documentation
- » Stormwater Design
- » Brownfield Compliance



Middlebury Connector Trail

Summit Metro Parks

The Summit Metro Parks contracted ms consultants to design a new parking lot, trail extension and trailhead for the Freedom Trail at Middlebury Road in Stow, Ohio. This new trailhead acts as the new terminus of the trail in Summit County.

Services

- » Civil Engineering
- » Environmental Engineering
- » Cost Estimation
- » Permitting
- » ADA Compliance



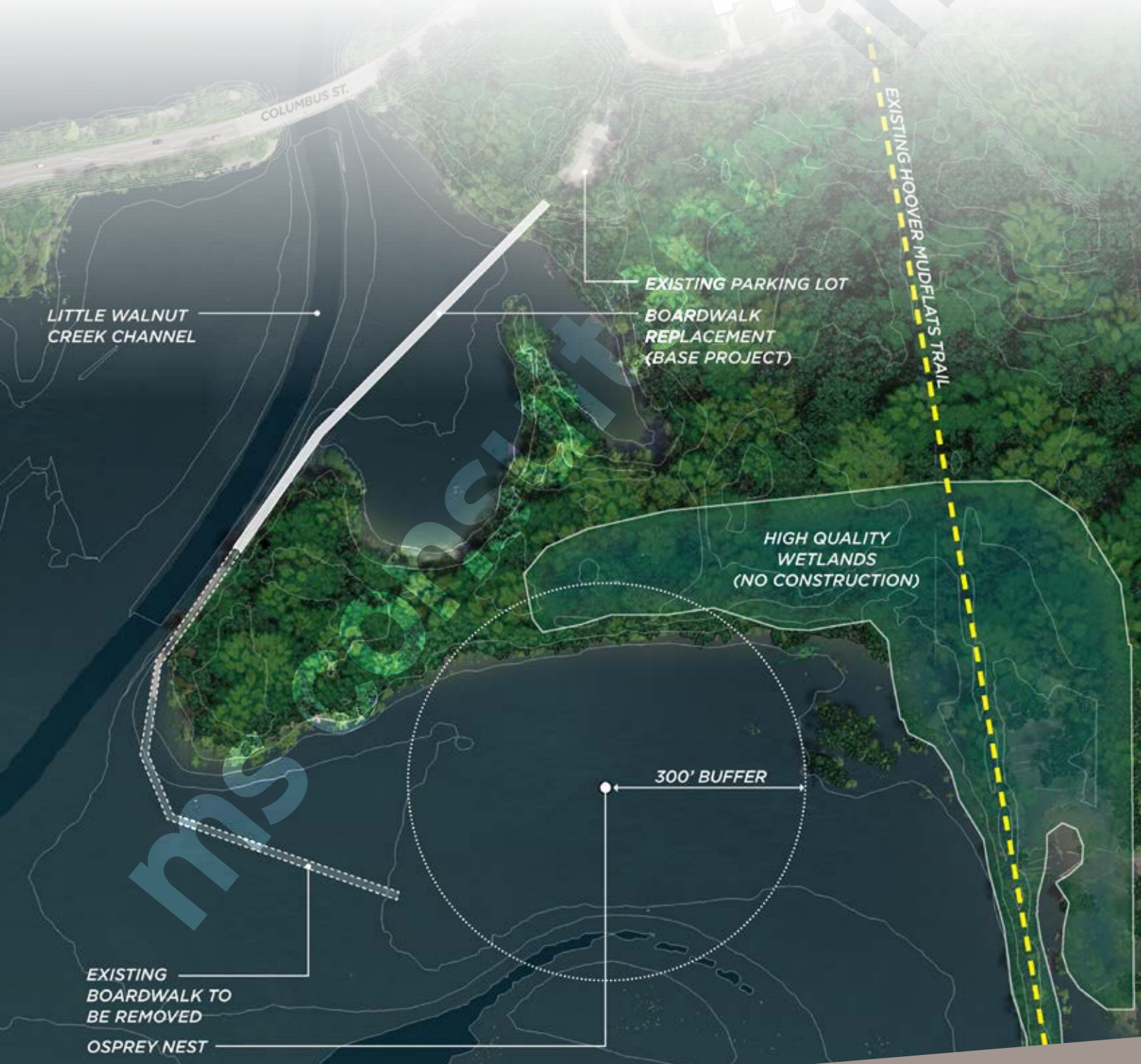
Hoover Reservoir Amenities

City of Columbus

ms was selected to assist the City of Columbus' Recreation and Parks Department to design and construct a new boat launch ramp, a 145-foot-long, 30-foot-wide fixed elevation fishing pier, and an 1,100-foot-long, 11-foot-wide elevated boardwalk over the Hoover Reservoir

Services

- » Site Assessments
- » Conceptual Design
- » Construction Documents
- » Permitting
- » Public Engagement
- » Geotechnical Engineering
- » Structural Engineering



Tam O'Shanter Soccer Park

Jackson Township

ms consultants provided site design and permitting services for a proposed soccer field complex in Jackson Township. Deliverables provided to the client included detailed site plans, grading, drainage plans, utility plans, and sediment and erosion plans.

Services

- » Architecture
- » Civil, Electrical, Mechanical, and Structural Engineering
- » Construction Administration
- » Cost Estimation
- » Army Corps Waterway Permit



State Park Boathouses

Ohio Department of Natural Resources (ODNR)

Provided design, bid and construction administration for installation of 2-bay ranger boathouses at Indian Lake and Buckeye Lake State Parks. Indian Lake involved removal and replacement of an existing shoreline retaining wall, and a new on-shore foundation for the 1200 SF metal building. The boathouse at Buckeye Lake was similar in size, supported by floating docks with metal decking, anchored to shore, with a gangway for access. Boathouse

accessories included bumpers, rub rails, cleats, weighted birds screen and overhead roll up doors with for the boat slips. Electrical work included a secondary power feed to a power distribution panel for interior/exterior lighting and garage door openers.

Services

- » Water Resources
- » Architecture
- » Civil, Structural, Electrical, and Mechanical Engineering
- » Permitting
- » Construction Administration



Deer Creek and Mahoning Valley Connector Trail

Stark County Park District (Stark Parks)

The Stark County Park District retained ms consultants to complete environmental documents and develop design plans for the Deer Creek/Mahoning Valley Connector Trail. The trail was built largely through land owned by the USACE in the Mahoning River floodplain.

Services

- » ODOT Environmental Approval Army Corps Waterway Permit
- » Trail Design
- » Wetland Delineation
- » Stream Assessment
- » Wetland Mitigation
- » Endangered Species Habitat Evaluation



Township Park Landscaping

Ohio Township

ms prepared design concepts and worked with the parks and recreation board members on sign designs and suitable, native plantings to match the character of the park facility. Services also included landscaping plans for the nature center and the design of a new nature trail.

Services

- » Architecture
- » Landscape Architecture
- » Civil Engineering
- » Site Design
- » Traffic Design



Park Master Plan and Maintenance Building

Brown Township

ms originally provided architectural services for a new Township Hall in Brown Township and is now furthering the Township's goals by developing a master plan for the park that surrounds the Township Hall. Simultaneously, the ms team is designing a new maintenance building for the Township within the park and will see it through construction.

Services

- » Master Planning
- » Architecture
- » Civil, Structural, and MEP Engineering
- » Stormwater Management
- » Wastewater Management
- » Permitting
- » Bidding Services
- » Construction Administration



Portage Lakes State Park Rehabilitation

Ohio Department of Natural Resources (ODNR)

ms consultants initially provided Master Planning services at Portage Lake State Park and was retained to provide final design services for a boat launch ramp, sheet pile bulkhead wall, new access road and parking areas for boaters and picnickers, a new restroom building, and a picnic pavilion. Additionally, the firm completed rehabilitation of the existing water supply well and the installation of a new on-site sewage disposal

system.

Services

- » Master Planning
- » Civil Engineering
- » Architecture
- » Stormwater Management
- » Wastewater Management



McDonnell Trailhead Towpath Trail Connector

Ohio and Erie Canalway Coalition

ms consultants designed a 1,200 foot segment of the Towpath Trail in Tuscarawas County, OH. The trail follows the former canal and crosses the Tuscarawas River using an aqueduct structure. A 295 foot boardwalk was required for the trail to cross the canal and travel underneath an active railroad bridge and designed by ms consultants, including a canopy structure due to falling debris from overhead trains.

Services

- » Civil and Structural Engineering
- » Bridge/Trail Design
- » Cost Estimation
- » Army Corps Waterway Permit
- » ADA Compliance
- » Water Resources
- » Construction Administration/Inspection
- » Hydraulic Studies



Indian Run Stream Restoration

Canfield Township

This project included a hydraulic study and restoration plans for approximately 1,000 feet of Indian Run in Canfield Township, Ohio. Plans called for removal of an existing concrete channel and construction of a meandering, over-wide natural stream channel. Grading was planned to reconnect the channel to a natural riverbank floodplain.

Services

- » Structural Engineering
- » Water Resources
- » Hydraulic Studies
- » Stormwater Management
- » Stream Assessment



Acton Lake Marine Utility Crossings

Ohio Department of Natural Resources (ODNR)

As part of comprehensive water & sewer improvements throughout Hueston Woods State Park, waterline and sanitary force main crossings of Acton Lake were designed with double wall HDPE pipes installed using the float & sink methods.

After completing design and construction document development for water and wastewater improvements, ODNR retained ms consultants to serve as construction administrator.

Services

- » Construction Administration
- » Resident Representative Coordinator
- » Shop Drawing Review
- » Coordinate Seasonal Construction
- » Special Inspections
- » Contractor Pay Review



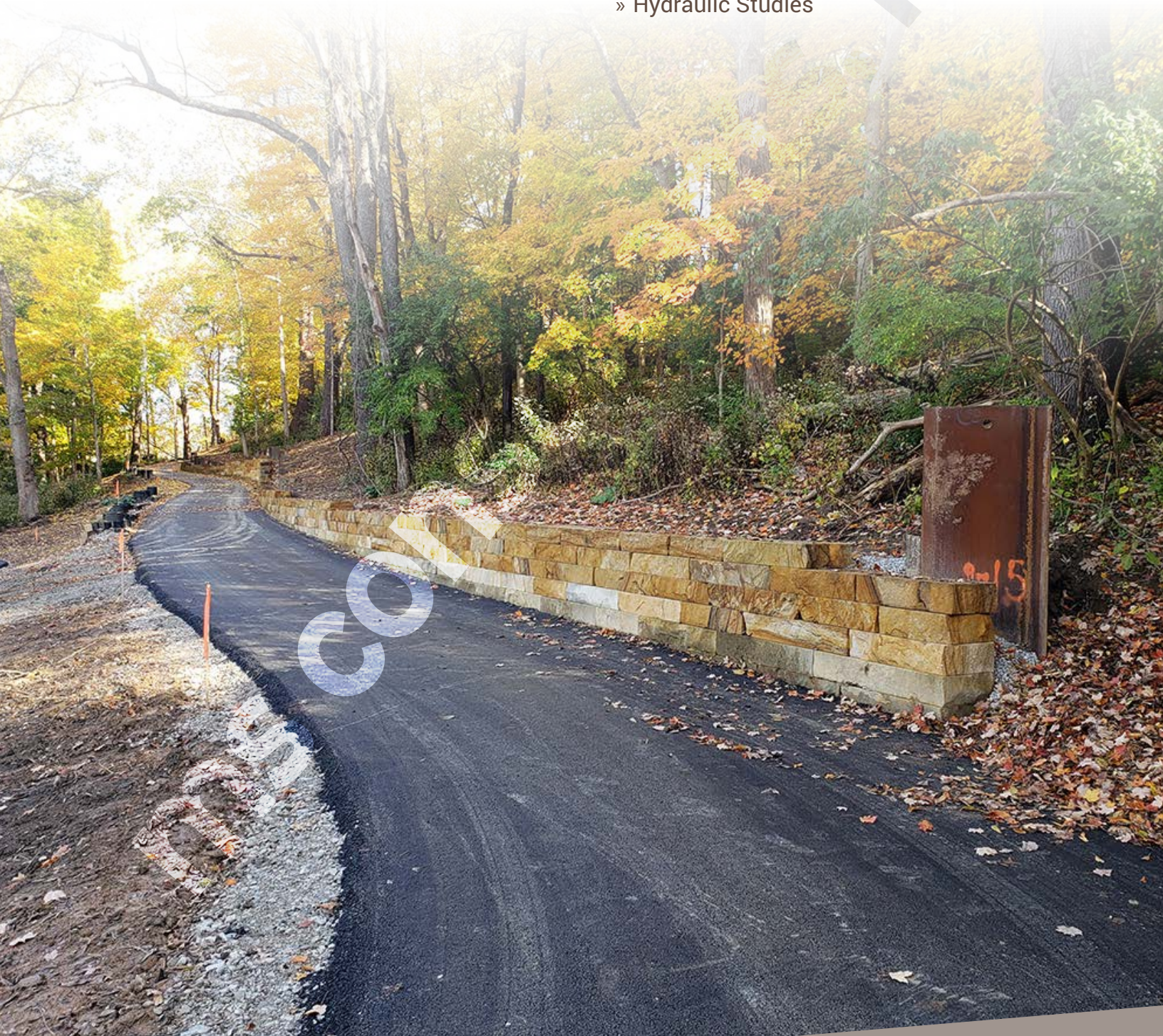
Alum Creek Trail Extension

City of Columbus

Between I-670 and Fifth Avenue, neighborhoods east of the Alum Creek Trail lack safe access to the trail. ms consultants developed 3 options and selected the preferred alternative based on input from a public meeting and a comparison of performance metrics. The resulting trail included the design of a connection to an existing bridge over Alum Creek.

Services

- » Civil Engineering
- » Trail and Bridge Design
- » Geotechnical Services and Surveying
- » Public Engagement
- » Geographic Information Systems (GIS)
- » Cost Estimation
- » ODOT Environmental Approval
- » ADA Compliance
- » Landscape Architecture
- » Hydraulic Studies



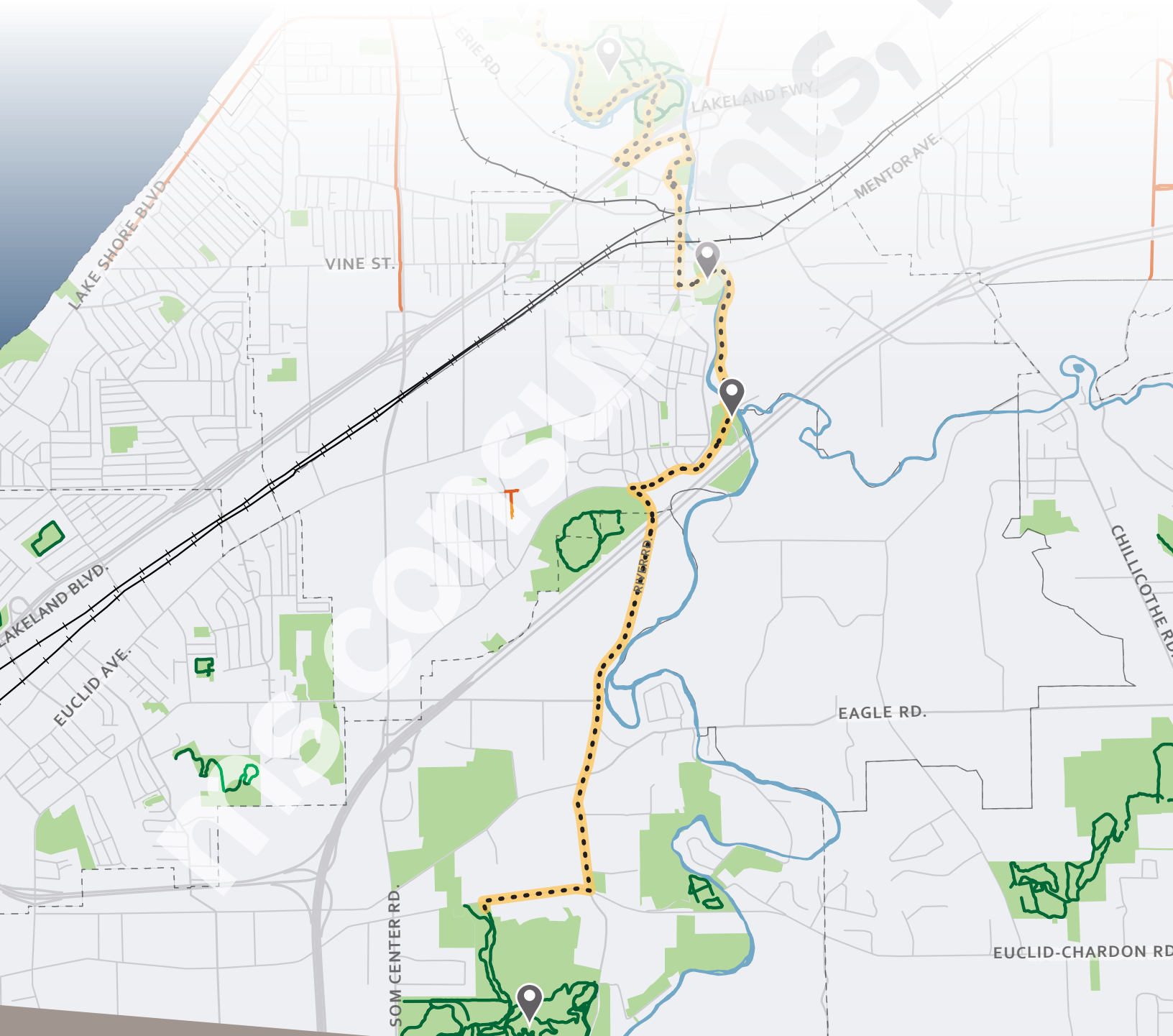
Chagrin River Access Plan

Chagrin River Watershed Partners (CRWP)

This plan was created to increase waterfront and recreation access and spur catalytic riverfront development. It incorporated community feedback to determine a conceptual alignment for a multi-use trail through ten communities and developed site plans for three public parks.

Services

- » Planning and Site Development
- » Land Use Analysis
- » Surveying
- » Grants and Funding
- » Trail Alignment
- » Public Engagement
- » Geographic Information Systems (GIS)



Old Man's Cave Gorge Trail Redevelopment

Ohio Department of Natural Resources (ODNR)

In wake of the destruction of several critical links in the Hocking Hills hiking system due to flooding, ms consultants prepared short term rerouting and long term trail redevelopment and permanent design of 12 bridges, drainage culverts, various stairs, signage and other features.

Services

- » Civil, Electrical, Environmental, and Geotechnical Engineering
- » Architecture and Landscape Architecture
- » Bidding Services
- » Construction Administration/Inspection
- » Surveying



Fulton Drive Tunnel

Stark County Park District (Stark Parks)

ms consultants provided detailed engineering services to prepare construction plans to build a safe passageway under Fulton Drive. The Fulton Drive Multimodal Tunnel project will provide a direct connection between Jackson High School and South Park on the south side of Fulton Drive to North Park, the new library and the new amphitheater on the north side of Fulton Drive.

Services

- » Civil and Structural Engineering
- » Trail Design
- » Retaining Wall Design
- » Cost Estimation



Township Park Master Plan

Plain Township

ms consultants provided master planning and park and trail design services for the Township, including wetland delineations, renderings, and cost estimates. Project administration and meeting facilitation were included in the process. Drainage and soil conditions were assessed to determine feasibility and potential locations for a pond in response to community

demand.

Services

- » Architecture
- » Master Planning
- » Landscape Architecture
- » Civil Engineering
- » Site Design
- » Public Engagement



Township Community Park

Jackson Township

ms provided master planning and landscape design services for Jackson Township, OH's community park. Athletic fields, community pavilions, and trails were designed for the 70 acre adjacent parcel acquired by the township. A new 400m track and seating located at the adjacent Jackson High School was also planned, engineered, and administered by the

firm.

Services

- » Architecture
- » Master Planning
- » Landscape Architecture
- » Civil Engineering
- » Site Design



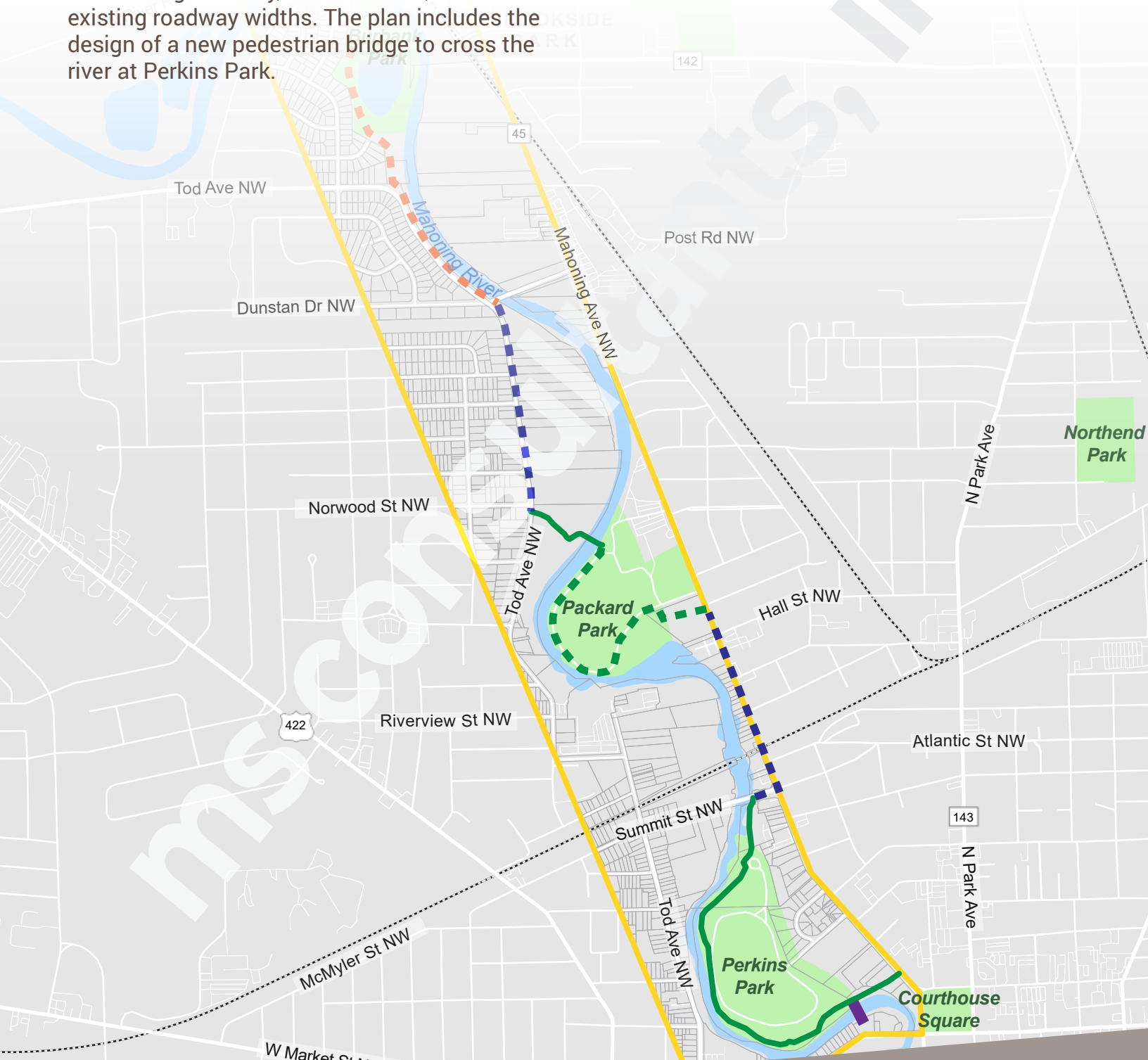
Trail Feasibility Study

City of Warren

In order to address a lack of connectivity between 4 Mahoning riverfront parks in Warren, OH, ms consultants completed a trail feasibility study. The Warren Waterway trail network totals 2.5 miles and includes new and existing trails along the river. Technical considerations included right of way, infrastructure, and existing roadway widths. The plan includes the design of a new pedestrian bridge to cross the river at Perkins Park.

Services

- » Master Planning
- » Civil and Traffic Engineering
- » Trail Design
- » Bridge Design
- » Public Engagement
- » Cost Estimation



A photograph of a building's curved facade. At the top, there is a large 3D logo consisting of three overlapping triangles: a green one on the left, a red one on the right containing the letters 'ms' in white, and a white one at the top with a grid pattern. Below the logo, the words 'engineers', 'architects', and 'planners' are mounted on the wall in large, orange, 3D block letters, stacked vertically.

ms
engineers
architects
planners