

# ANOTHER GRAND OPENING DELAY?



**ms consultants, inc.**  
engineers, architects, planners

## Proactive Supply Chain Management:

Stop letting supply chain issues impact your grand opening!

Trust the ms Full-Service A/E Team to help get your store OPEN ON TIME

Amidst ongoing supply chain challenges, fortify your business by proactively addressing extended material and equipment lead times. With our expertise, we can help mitigate labor scarcity and strategize order scheduling to keep you ahead of the competition, providing a robust response to growing market uncertainties.

**A delayed opening of two months costs an average of \$296,000 in lost revenue\***

## HERE'S HOW WE CAN HELP



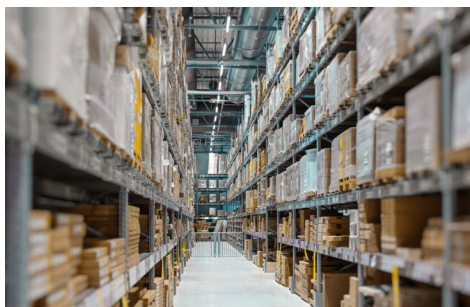
### Standardize Materials

Warehousing & National Accounts



### Create a Network

Contractor Relationships



### Circumvent Competition

Strategic Delivery Schedules

\*According to IBIS World's 2022 industry report on the fast food industry



## Standardize Materials

Avoid lead-time delays by standardizing materials and equipment, a foundational move that simplifies operations. Complement this with warehousing across your portfolio, assuring instant access and shielding against supply chain hiccups. Further magnify these benefits by establishing national accounts, solidifying a long-term purchasing edge that transcends single projects.

**Start eliminating lead-time delays by laying the ground work for material and equipment availability.**



## Create a Network

Overcome challenges of scarce labor and inconsistent construction methods by forming strategic partnerships with construction managers and contractors. By fostering these relationships, even through non-binding commitments, you can elevate the level of service and secure a privileged position on the priority list.

**Capitalize on a powerful network of pre-qualified contractors, ensuring both time efficiencies and consistent construction practices.**



## Circumvent Competition

Account for the cyclical and seasonal nature of construction by strategically planning project delivery schedules. By doing so, you can effectively mitigate supply chain bottlenecks caused by surges in ordering. Through proactive pipeline management and well-planned schedules, you can ensure a continuous flow of materials, avoiding disruptions.

**Take control of your construction projects with precision scheduling that avoids supply chain pressures.**

### key benefits



Cost Savings



Reduced Delays



Increased Consistency



Labor Availability



Risk Reduction



Precision Planning

**Learn more about how ms consultants helps get your store open on time.**